

Gastrosocopy Packages

A Gastrosocopy (or endosocopy) is an examination of the oesophagus (food pipe), stomach and duodenum (upper part of the small bowel) using a flexible telescope called a gastrosocope. When necessary, during the examination, a number of small procedures can also be carried out.

**Prices from:
\$11,900**

Package Fee (including hospital and doctor fees)

	Standard Room	Twin Room	Private Room
Gastrosocopy - IV Sedation	\$11,900	\$13,800	\$17,200
Gastrosocopy- M.A.C.	\$14,800	\$17,100	\$21,400

Prices Include:

- Room (discharged the same day)
- Operating theatre
- Specialists' fee
- Nursing care
- Drugs and dressing

IV sedation – A sedative is injected into the vein to help patients feel relaxed, whilst still being aware and able to respond.

MAC – Monitored Anaesthetic Care is administered by a specialist in anaesthesia and is commonly used in day surgery. It helps patients feel calm and unaware of the procedure.

Do not eat or drink at least 6 hours prior to the procedure.

Stop taking aspirin or Plavix (clopidogrel) 7 days before the procedure. Stop warfarin 5 days before the procedure. Discuss with the doctor in advance. A blood test may be required.

Terms and Conditions:

- The above charges do not include removal of polyps and biopsies procedures. Additional charges on specialist fee and other laboratory or imaging tests, special equipment, treatment and medication beyond those included in the package.
- This package is for day procedure only.
- A referral letter is required to book the procedure.
- This package is only available for designated doctors.
- Other extra charges include emergency or unsocial hours services beyond the routine procedures; procedures extending beyond the scheduled operating theatre time; and miscellaneous items such as meals and IDD telephone calls.

For appointment and enquiry, please contact

Patient Service Centre

t 2537 7407

Email: psc.referral@matilda.org

41 Mount Kellet Road,
The Peak, Hong Kong

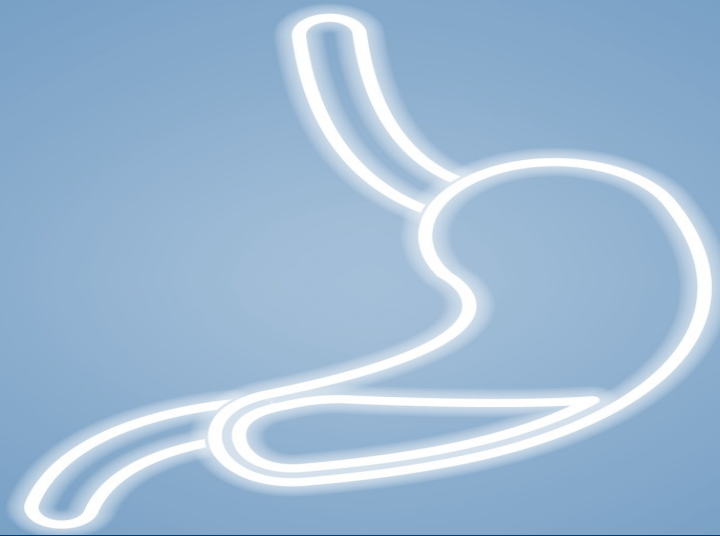
For full terms and conditions, scan the QR code to visit our website.



matilda
International Hospital
明德國際醫院

All packaged items are fixed. Prices are subject to change without prior notice.

Effective from August 2021
SUR-GASLD/SUR-GASMD



胃鏡套餐

胃鏡檢查（或內窺鏡檢查）乃利用一條易彎曲的內視鏡，檢查食道、胃和十二指腸。如有需要，檢查時可進行一些小型的醫學程序。

由 \$11,900 起

套餐收費（包括醫院和醫生收費）

	標準房	雙人房	私家房
胃鏡檢查 - 靜脈麻醉	\$11,900	\$13,800	\$17,200
胃鏡檢查 - 睡眠監察麻醉	\$14,800	\$17,100	\$21,400

靜脈注射—將鎮靜劑注射到病人靜脈內，幫助放鬆、但仍能保持清醒和作出反應。

監察麻醉—由麻醉科醫生負責麻醉，常用於日間手術，讓病人放鬆、保持平靜、昏昏欲睡而不自覺程序正在進行。

條款及細則:

- 以上收費不包括切除瘰肉和活組織化驗。套餐以外的醫生費、化驗、影像服務、特別的儀器、治療和藥物將額外收費。
- 套餐只限日間程序。
- 預約時，須出示醫生轉介信。
- 套餐只適用於指定醫生。
- 其他額外收費包括：緊急服務或非正常營運時間進行的常規以外的手術、原定時間以外進行的醫療程序、以及其他雜項包括食物和長途電話費用等。

如欲參閱詳盡的收費政策，請掃描 QR code 瀏覽網站



所有套餐項目均固定。價格如有更改，恕不另行通知。

費用已包括:

- 房間(即日出院)
- 手術室
- 醫生費
- 護理服務
- 藥物和洗傷口敷料

檢查最少 6 小時前不能飲食。
7 天前停止服用阿斯匹靈或保栓通 (Plavix)，以及檢查 5 天前停止服用華法林。請諮詢醫生，或需先驗血。

預約及查詢，請聯絡

客戶服務中心

電話 2537 7407

電郵: psc.referral@matilda.org

香港山頂加列山道 41 號